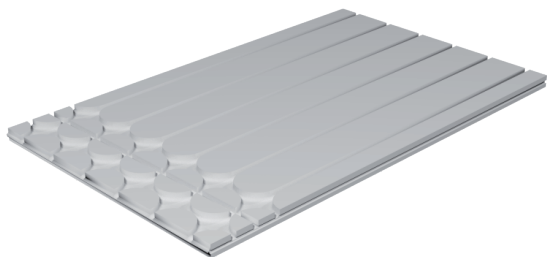




**AKTIVFLOOR** DATA SHEET

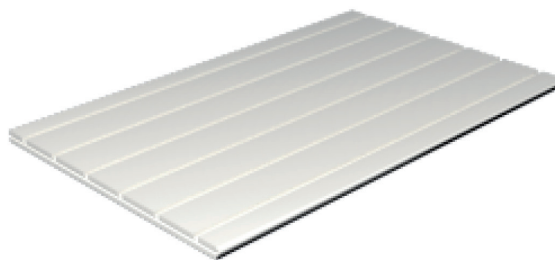
## TYPE OF PANELS

standard dimensions mm 600 X 1200 step 100 mm



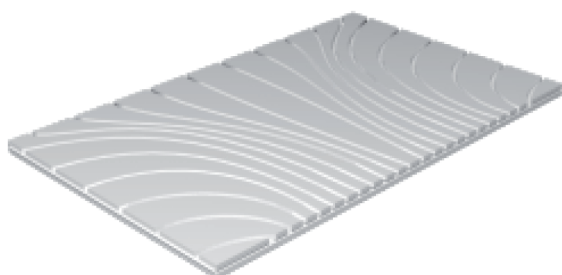
### GFT TESTA

Usable on most surfaces. In drafting the radiant tube, it allows straight, transverse and return passage to the tubes of transit.



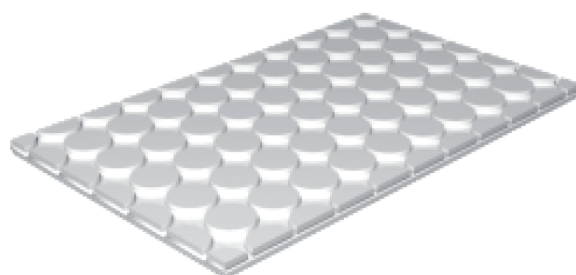
### GFD DRITTO

It can only be used for the passage of straight pipes.



### GFC COLLETTORE

It is positioned immediately under the manifold and allows the perfect distribution of the tubes in all directions, allowing the passage of up to 22 tubes.



### GFB BUGNATO

It is positioned in front of the GF COLLETTORE, to allow restarts according to the scheme of distribution of various circuits.

## LAYING SYSTEMS

Thanks to the optimized sizes, the Aktifloor panels can be easily dissected on site with electrical tools such as circular saw or jigsaw. Even the realization of the laying patterns is simple because it allows to optimize the active surface due to the size of the various panels, it is therefore possible to have the spiral circuit, normal or double coil.

The panel is manufactured to allow laying pipe with 12 mm external diameter in Pex A, B Pex, Pex C, Pe RT or plywood. For any technical requirement ATTIVA staff it is able to support both the installer of the panels that the designer of the plant and therefore provide all the conditions for the construction in a workmanlike entire system.

## PANELS TECHNICAL DATA SHEET

|                                       |                |
|---------------------------------------|----------------|
| Sizes                                 | 1.200 x 600 mm |
| Thickness (mm)                        | 25             |
| Lambda $\lambda$ (W/m <sup>2</sup> K) | 0,33           |
| Weight                                | 24 Kg/sqmt     |
| Distance between pipes                | 10             |
| Fire resistance                       | Eu A1 class    |

## WARNING!

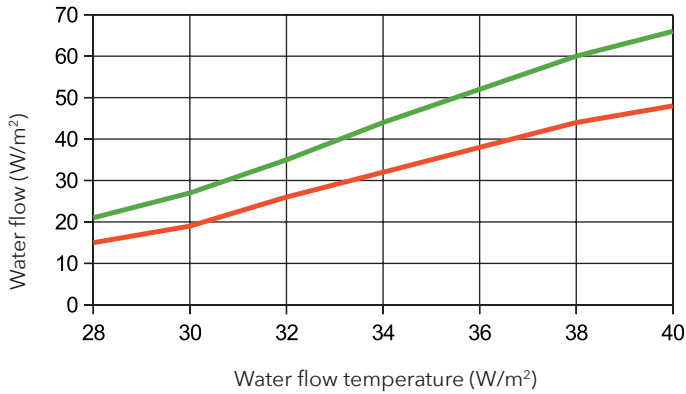
The use of the panel for cooling the environment must be designed according to the flow temperature  $T_w$ , the ambient temperature  $T$  and relative humidity RH of the environment.

An erroneous calibration can lead to the formation of condensate in the surface of the panel with consequent degeneration of the panel itself and the surrounding elements.

## HEATING YIELD

### HEATING YIELD

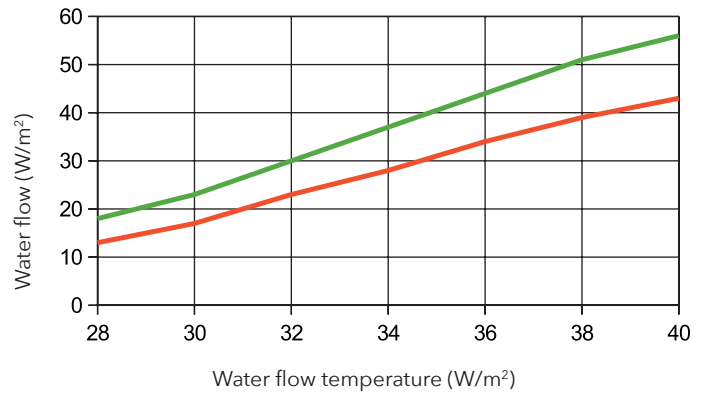
Ceramic floor ( $R=0,1 \text{ m}^2 \text{ k/W}$ )



— pipes distance 10 cm — pipes distance 20 cm

### HEATING YIELD

Wood floor 10mm ( $R=0,5 \text{ m}^2 \text{ k/W}$ )

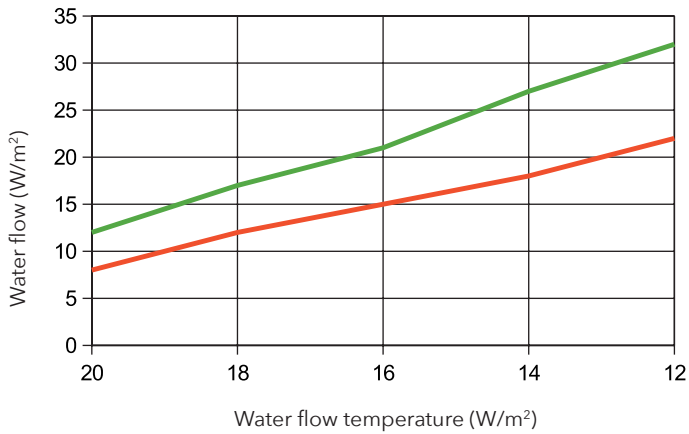


— pipes distance 10 cm — pipes distance 20 cm

## COOLING YIELD

### COOLING YIELD

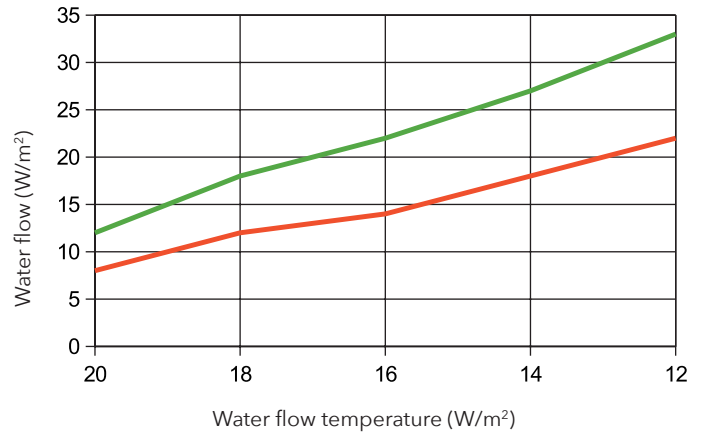
Wood floor 10mm ( $R=0,5 \text{ m}^2 \text{ k/W}$ )



— pipes distance 10 cm — pipes distance 20 cm

### COOLING YIELD

Wood floor ( $R=0,1 \text{ m}^2 \text{ k/W}$ )



— pipes distance 10 cm — pipes distance 20 cm



**AKTIVFLOOR DATA SHEET**



NORDTEX Srl - Via Prati all'Ospizio, 6 I-39043 Chiusa (BZ) - ITALY  
T. +39 0472 84 71 10 - F. +39 0472 52 34 71  
info@nordtex.it | www.nordtex.it